



NWL GP Federation

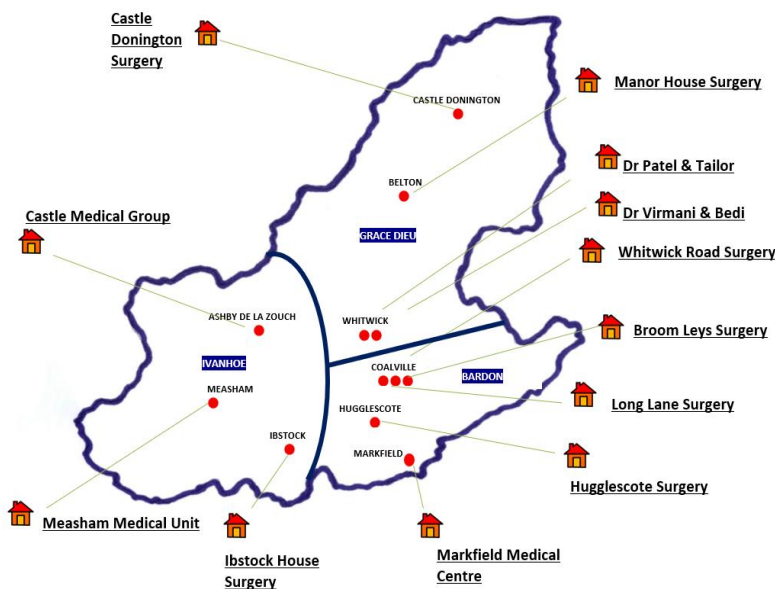
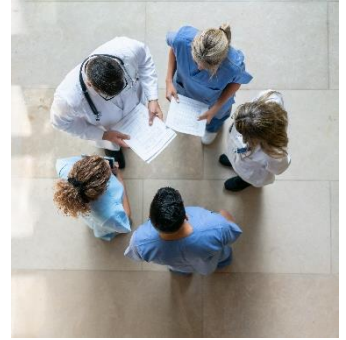
Working together for our patients

Welcome to the first North West Leicestershire GP Federation newsletter!

We will be producing this newsletter bi-monthly to provide information on services we offer, and to share any important news! If you have a suggestion of what you would like included in future editions, please let us know by emailing us at:

nwl.gpltd@nhs.net

November 2023



Who are the North West Leicestershire GP Federation?

We are a federation of 12 GP practices in the area, working together at scale to deliver high quality patient-focussed healthcare to our population of around 114,000 patients.

A welcome message from our Clinical Director

We formed in 2014 as a network of all our practices working together to provide services to help improve patient care within North West Leicestershire. Currently we provide many services offered to our patients within each practice- these include Anticoagulation monitoring for patients on blood thinning medication, Contraceptive Services- for Coils and Implants and H. Pylori Breath tests for further investigation of patients with Indigestion.

We have run successful Covid Vaccination campaigns in 2021-2022 and in 2023 with over 120,000 Covid vaccinations being given.

We also employ approximately 80 clinical staff that work at your surgery -

all of whom provide a wider range of skills and extra appointment capacity at your Surgeries. We are the largest Network in Leicestershire, and we will continue to provide services that help our patients.

In 2024 we will look to set up a Women's Health Hub looking to provide specialist Menopause and Sexual Health care for patients, as well as setting up a screening project for patients with liver problems, to attempt to catch signs of liver disease early.

Best wishes

Dr Kirk Moore - Clinical Director of NWL GP Federation & GP Partner at Measham Medical Unit



Who else can I see, other than my GP?



Many health professionals work alongside GPs – you may be offered one of these appointments with us. Having the benefit of these roles ensures that our patients are provided with high quality care, whilst releasing valuable appointment times for GPs and nurses.

Examples of these roles include Social Prescriber Link Workers, Advanced Nurse Practitioners, First Contact Physiotherapists, Clinical Pharmacists, Trainee Nurse Associates and Cancer Care Co-Ordinators.

A focus on these roles, and what services we can provide to you is to follow – watch this space.

Enhanced Access

We offer telephone appointments from 6.30pm-8pm Monday to Friday, with either a GP, Advanced Nurse Practitioner, or a Clinical Pharmacist – for pre-booked appointments only.

Additionally, we offer face to face appointments 9am-5pm every Saturday (alternating between Long Lane Surgery, Coalville and Castle Medical Group, Ashby De La Zouch) - for pre booked appointments only.

These appointments can be used for routine, non-urgent consultations including vaccinations, minor illness, GP appointments, menopause consultations, ear syringing, cervical smears, and dressing changes. The aim is to provide additional options for patients who might find it difficult to access services during regular hours.



To find out more regarding events, or clinics we are running, follow us on the following social media pages:

Facebook - North West Leicestershire GP federation

X (Formally Twitter) - @nwlgpfed